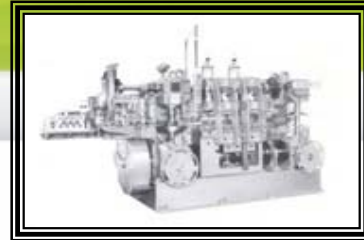




WHIPCITY TOOL & DIE CORPORATION

813 COLLEGE HIGHWAY, P.O. BOX 99 SOUTHWICK MA 01077-0099
(413)569-5528 FAX (413)569-0494 TOLL FREE (800)905-7909
www.whipcitytool.com sales@whipcitytool.com

- DIE DESIGNING SERVICE
- TOOLS & DIES
- METAL STAMPINGS
- PRESSWORKING MACHINERY
REBUILD & REPAIR



V-83 Vertislide Specifications

<http://www.whipcitytool.com/V83-Vertislide-Specifications.html>

V-83 Vertislide Specifications	INCHES	METRIC
STROKES PER MINUTE	40 to 120	40 to 120
MAX. STRIP WIDTH	4"	100mm
MAX. STRIP THICKNESS	.093"	2.5mm
MAX. WIRE DIAMETER	.250"	6mm
WIRE LINE HEIGHT	50"	1270mm
FEED STROKE	14"	350mm
PRESS CAPACITY	20 & 30 tons	18 & 27 tons
PRESS STROKE	1"	25mm
PRESS TYPE	single ram	single ram
TOTAL PRESS CAPACITY	70 tons	63 tons
LENGTH OF DIE AREA	40"	1010mm
SHUT HEIGHT OF PRESS	7.373"	190mm
PRESS RAM ADJUSTMENT	.375"	10mm
MAXIMUM WORKING AREA	76"	1930mm
CUTOFF SLIDE STROKE	.500"	13mm
TOP SLIDE STROKE	1.5"	38mm
SIDE SLIDE STROKE	2.5"	64mm
BOTTOM SLIDE STROKE	1.5"	38mm
STRIPPER STROKE	.625"	16mm
	to	to
	3.250"	83mm
CENTER FORM STROKE	.625"	16mm
	to	to
	3.250"	83mm
MOTOR HP	7.5	(no conversion)
POWER REQUIREMENTS	230/460 V, 50/60 Hz, 3 phase	
NET WEIGHT	24000 lbs.	10900 kilos
LENGTH	144"	3660mm
WIDTH	74"	1880mm
HEIGHT	80"	2030mm

Additional helpful Vertislide Specifications and links from www.whipcitytool.com.

V-81 Specifications <http://www.whipcitytool.com/V81-Vertislide-Specifications.html>
 V-82 Specifications <http://www.whipcitytool.com/V82-Vertislide-Specifications.html>
 V-82.5 Specifications <http://www.whipcitytool.com/V82.5-Vertislide-Specifications.html>

For more information please contact us sales@whipcitytool.com.